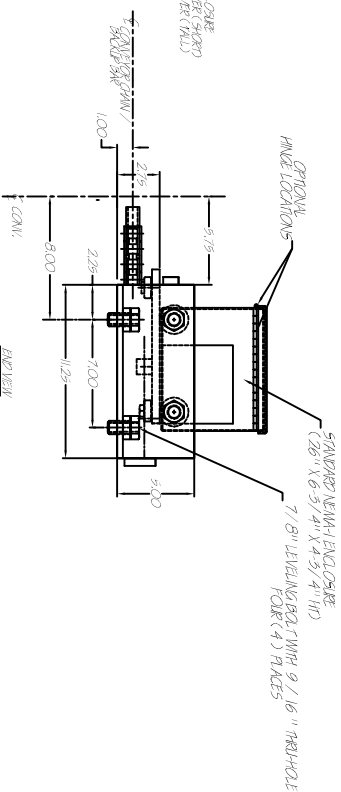
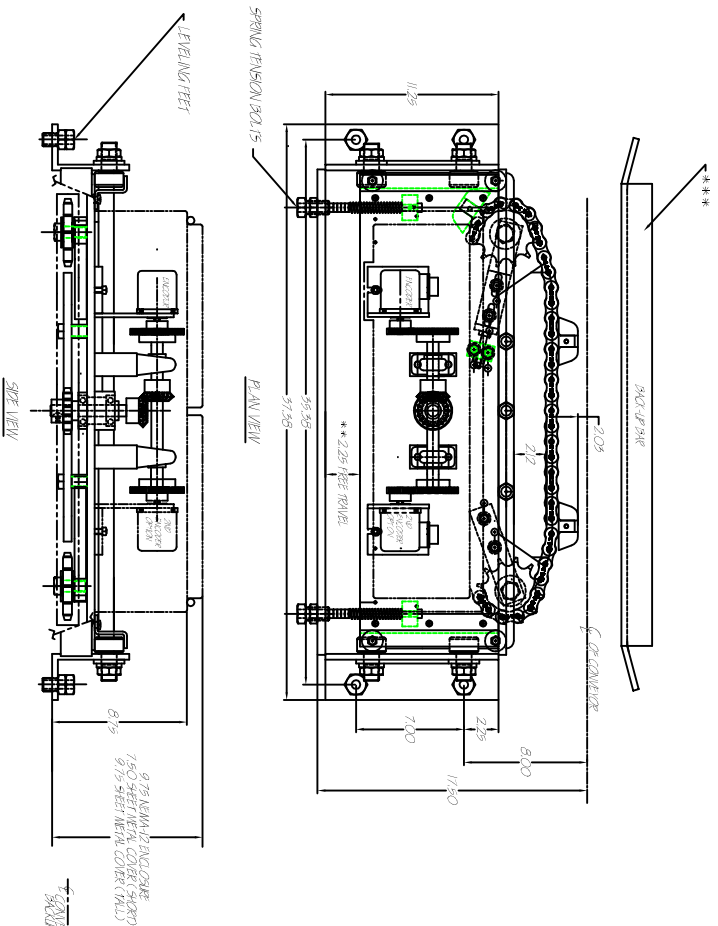


EDON LINE-TRACKER
INSTALLATION INSTRUCTIONS

MODELS

A - 6011	A - 9435
A - 8586	A - 11420
A - 8157	A - 12272



INSTALLATION INSTRUCTIONS

- * FOR OVERHEAD HOISTING USE EDON A-7186 SUPPORT BRACKET. SQUARE AND CENTER BRACKET TO CONVEYOR RAIL AND WELD CROSS ANGLES TO CONVEYOR RAIL.
- * FOR FLOOR MOUNTING THE SUPPORT BRACKET IS OPTIONAL. OR MUST BE FIELD FABRICATED. PROVIDE ADJUSTMENT PERPENDICULAR AND PARALLEL TO THE CONVEYOR.
- * IN ALL CASES THE UNIT MUST BE INSTALLED SQUARE AND LEVEL WITH THE CONVEYOR. IF NECESSARY CUT SLOT IN CONVEYOR TRACK 3/4" LONG X 1 - 1/2" WIDE ON CONVEYOR GENERAL NE FOR POOL ACCESS. POSITION THE LINE-TRACKER SLOT THAT THE EDON DOORS ARE CENTERED IN THE OPENING HEIGHT OF THE CONVEYOR LINK.
- * ALIGN LINE-TRACKER TIGHT TO CONVEYOR CHAIN AND BACKLASH SIGHTLY TO PROVIDE SMOOTH OPERATION. DO NOT LET EDON CHAIN CONTACT CONVEYOR CHAIN SPACE AT APPROX. (1.5") OR SERIOUS TRACKING PROBLEMS WILL OCCUR. ON SYSTEMS AFTER 177 OF A SECONDARY RAIL BALL, ADJUST THE EDON DOG CHAIN TO THE CONVEYOR CHAIN. THE SECONDARY RAIL BALL SHOULD JUST CONTACT THE SIDE OF THE CONVEYOR LINK. IF THERE IS NOT SPACE FOR THE SECONDARY RAIL BALL - BACKLASH.
- * DO NOT RESTRICT FREE RAIL. WITH ELECTRICAL CONTACT OR HOISTING BRACKETS.
- * ON SOME SYSTEMS A BACK-UP BAR MAY BE REQUIRED TO MAINTAIN LINE-TRACKER ENGAGEMENT WITH THE CONVEYOR. CONTACT EDON FOR DETAILS. (BACK-UP BARS IMPROVE ACCURACY)
- * DO NOT INSTALL UNIT ON CONVEYOR MACHINES, DECANES OR 9' ACT. SIZE OF DRIVE.
- * ON SOME SYSTEMS PRONE TO DIRT OR HEAVY CONTAMINATION BUILDUP. SUCH AS PAPER FINISHING, IT IS PREFERRED TO INSTALL THE EDON ON THE SAME SIDE OF THE CONVEYOR AS THE DRIVE.
- WARNING: DO NOT ATTEMPT TO INSTALL OR SERVICE UNIT WHILE CONVEYOR IS IN OPERATION. CONVEYOR SYSTEM MUST BE "LOCKED OUT" BEFORE PERFORMING ANY SERVICE.

ALSO REFER TO INSTALLATION GUIDELINES DATED 10-01-02

THE INFORMATION CONTAINED ON THIS DRAWING IS CONSIDERED CONFIDENTIAL AND IS PROVIDED FOR PROPOSAL, EVALUATION OR MAINTENANCE PURPOSES ONLY. IT IS NOT TO BE COPIED OR USED FOR ANY PURPOSE, OTHER THAN AS SPECIFIED, WITHOUT THE EXPRESS WRITTEN PERMISSION OF EDON CONTROLS, INC.

TITLE: HEAVY DUTY LINE-TRACKER
INSTALLATION INSTRUCTIONS

CUSTOMER

DRAWN BY: RBT SCALE: NONE DATE: 6-15-05

EDON CONTROLS, INC.

TRDY, MICHIGAN

DATE: 6-15-05
SHEET: 1 OF 1